



MONTHLY MEMBERSHIP PROGRESS REPORT

District 2 S1

Results as of: 4/30/2015

GMT: HAL GRIFFIN

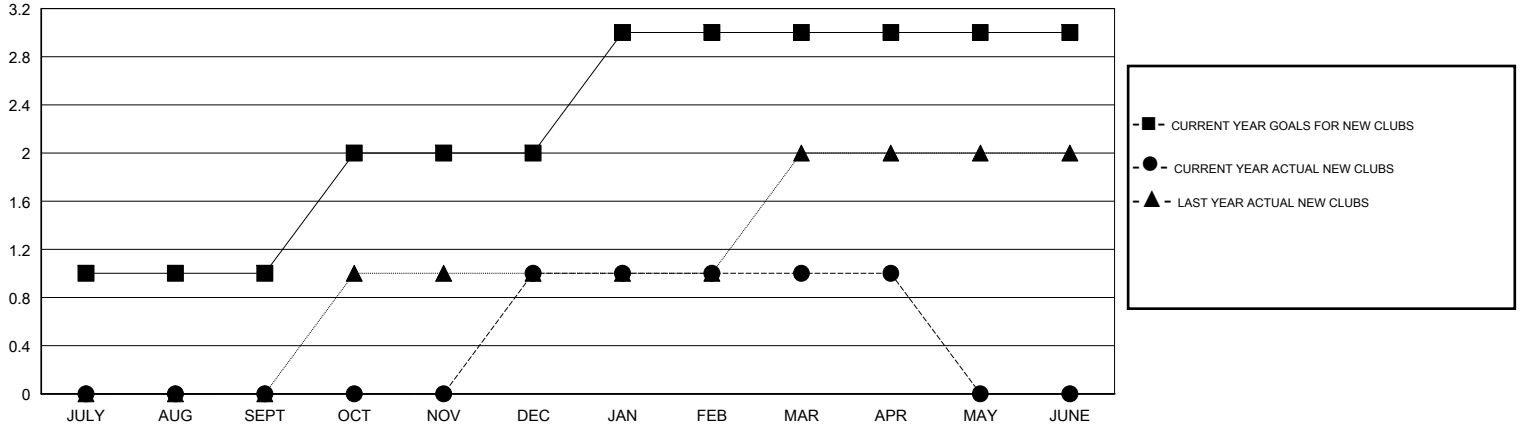
LOCATION TEXAS

GMT CA 1

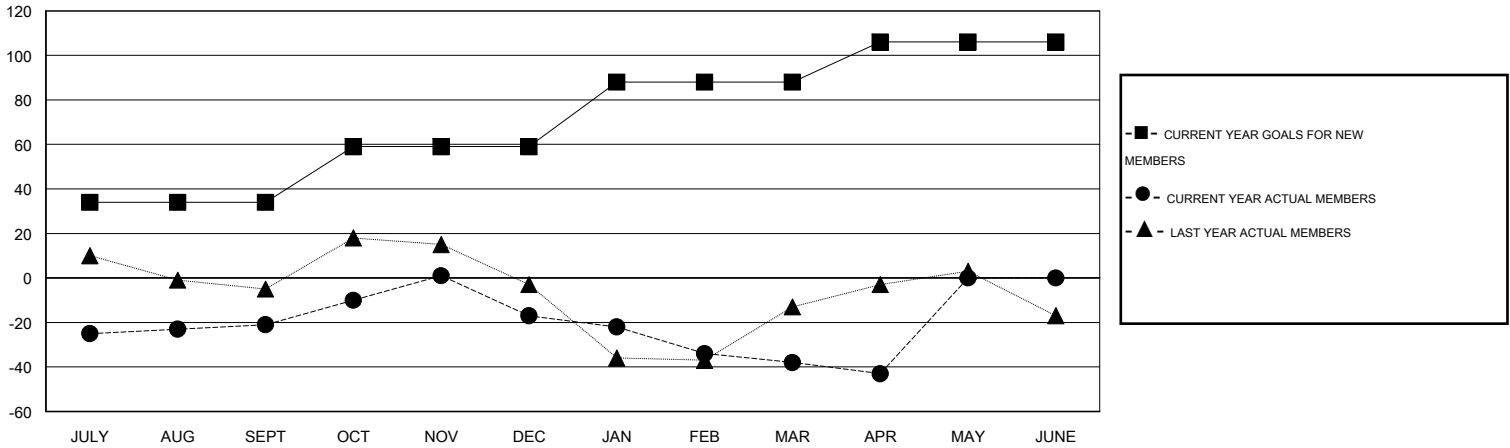
Clubs				
RESULTS FOR 2014-2015				
QUARTER	NEW CLUB GOAL	NEW CLUBS	DROPPED CLUBS	NET GAIN/LOSS
JULY/AUG/SEPT	1	0	1	-1
OCT/NOV/DEC	1	1	0	1
JAN/FEB/MAR	1	0	2	-2
APR/MAY/JUNE	0	0	0	0

Members				
RESULTS FOR 2014-2015				
QUARTER	NEW MEMBER GOAL	CHARTER AND NEW MEMBERS ADDED	DROPPED MEMBERS	NET GAIN/LOSS
JULY/AUG/SEPT	34	43	64	-21
OCT/NOV/DEC	25	90	86	4
JAN/FEB/MAR	29	57	78	-21
APR/MAY/JUNE	18	24	29	-5

GOALS AND ACTUAL NEW CLUBS CUMULATIVE



GOALS AND ACTUAL MEMBERS CUMULATIVE



DROPPED CLUBS: 3	
<u>DROPPED MEMBERS</u>	
DECEASED	16
CLUB CANCELLED	0
OTHER	241
TOTAL	257

34 CLUBS OF 56 ADDED 1 OR MORE NEW MEMBERS

<u>GENDER DISTRIBUTION</u>	
MALE	1,271 (73.38%)
FEMALE	461 (26.62%)

[CLICK HERE FOR HEALTH ASSESSMENT DATA](#)

FAMILY UNIT MEMBERS	239
HEAD OF HOUSEHOLD	117
NON-HEAD OF HOUSEHOLD	122